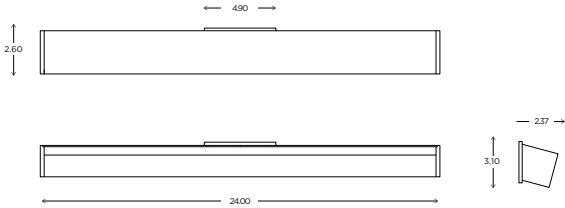


# Axis 24

ADA | CUSTOM OPTIONS



The AXIS is a unique and modern linear fixture. The directional body provides movement and functional light to any space. The AXIS can be installed in pairs on each side of a mirror as well as in a horizontal orientation from above. It is also a great solution for hospitality and corridor spaces.

The footprint of this fixture is significantly slimmer in both its width and projection than anything on the market.

## DIMENSIONS

24.00"H x 2.60"W x 2.37"P

## LAMPING / VOLTAGE

- [1] 24W Fluorescent T5HO Bipin Base  
1860 Lumens, 3000K, 120V, non-dimming
- [1] 30W LED Strip, 1900 Lumens, 3000K,  
120V, dimming

\*See Installation Instructions for recommended LED dimmers

## FINISH

Brushed Nickel, Polished Nickel, Polished Chrome

## DIFFUSER

Matte Opal Acrylic

Customize this fixture to your specific needs

\*Requires standard single gang jbox  
installed in same orientation as fixture

Fixture can be mounted VERTICALLY or HORIZONTALLY



Finish shown: Polished Chrome



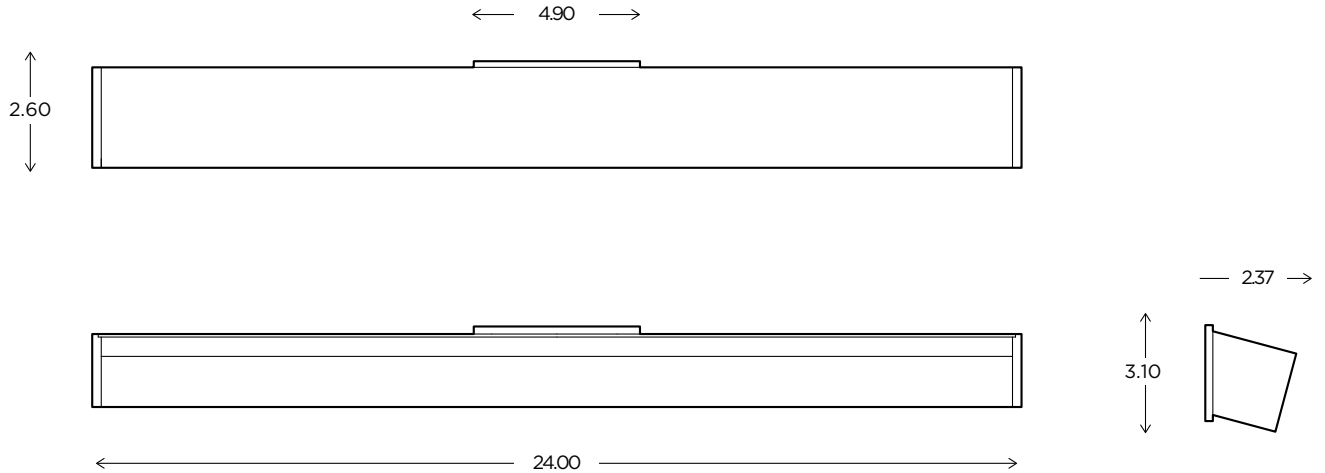
**Ayre Architectural Lighting**  
14 Bristol Drive, Unit B  
South Easton, MA 02375

**Tel 508.205.0545**  
Toll Free 877.722.AYRE  
Fax 508.205.0548

**ayrelight.com**

# Axis 24

ADA | CUSTOM OPTIONS



\*Requires standard single gang jbox installed in same orientation as fixture

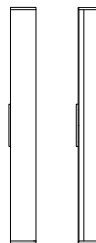
Refer to the instructions for correct j-box placement and installation requirements.

Fixture can be mounted VERTICALLY or HORIZONTALLY

Est. Weight: 3.68 lbs

## MODEL

AXIS SCONCE // AXIS24



## DIMENSIONS

Height: 24.00  
Width: 2.60  
Projection: 2.37

## FIXTURE TYPE

ADA Sconce / A


## DIFFUSER

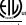
Matte Opal Acrylic / MA

## FINISH

Brushed Nickel / BN  
Polished Nickel / PN  
Polished Chrome / CH

## LAMPING / VOLTAGE

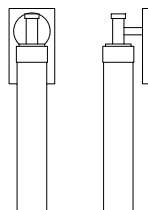
FLUORESCENT / FL   
[1] 24W Fluorescent T5HO  
Bipin Base, 120V,  
non-dimming

LED / LED   
[1] 30W LED Strip, 120V,  
dimming

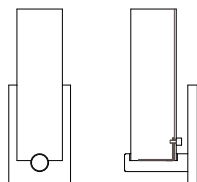
\*See Installation Instructions for recommended LED dimmers

## RELATED PRODUCTS

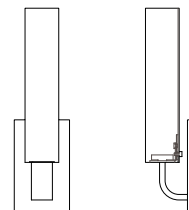
CIRC SCONCE // CIR1  
ADA



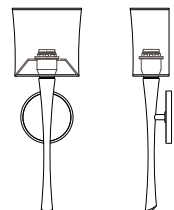
CLIK SCONCE // CLK 1  
ADA



REFLEX SCONCE // REF1  
ADA



EURO 1 SCONCE // EUR1  
ADA



**Ayre Architectural Lighting**  
14 Bristol Drive, Unit B  
South Easton, MA 02375

**Tel 508.205.0545**  
Toll Free 877.722.AYRE  
Fax 508.205.0548

[ayrelight.com](http://ayrelight.com)